

FROM CHART 11206

**NOTE A**  
 Navigational regulations are published in Chapter 2, U.S. Coast Guard 1984 A. Amendments or revisions to Chapter 2 are published in the Notices to Mariners. Information concerning the regulations may be obtained at the Office of the Commander, 5th Naval District, United States Coast Guard, or at the Office of the District Engineer, United States Coast Guard, in Washington, North Carolina. Refer to channel regulation section numbers.

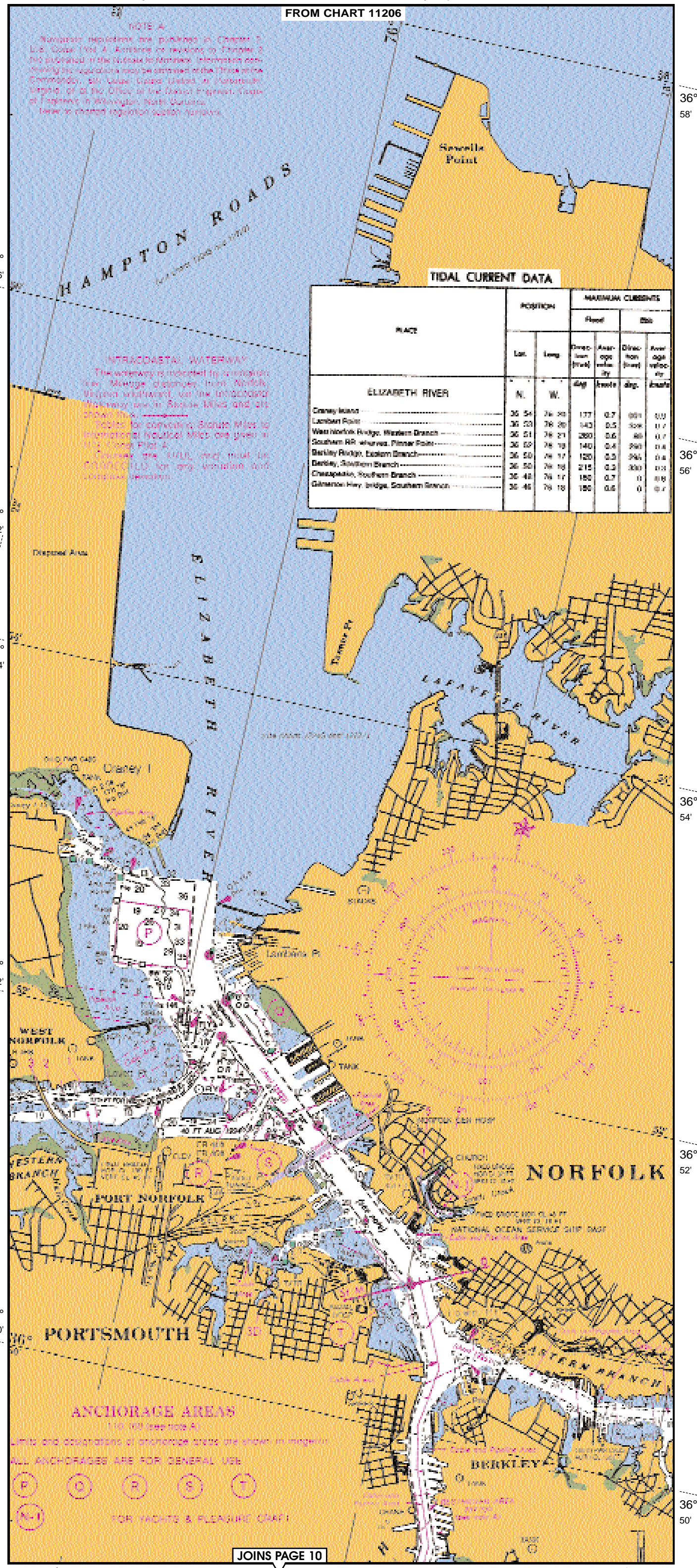
**INTRACASTAL WATERWAY**  
 The waterway is indicated by a red line. Measured distances from Norfolk, Virginia southward, on the Intracoastal Waterway are in Statute Miles and are shown in red.

Points for connecting Statute Miles to International Nautical Miles are given in the Table Pilot A.

Distances are **VALID** and must be **CONFIRMED** for any variation and current condition.

**TIDAL CURRENT DATA**

PLACE	POSITION		MAXIMUM CURRENTS			
	Lat.	Long.	Direction (true)	Average velocity (knots)	Direction (true)	Average velocity (knots)
<b>ELIZABETH RIVER</b>						
Craneys Island	36 54	76 20	177	0.7	001	0.3
Lambert Point	36 53	76 20	143	0.5	306	1.7
West Norfolk Bridge, Western Branch	36 51	76 21	280	0.6	00	0.7
Southern RR wharves, Pinner Point	36 53	76 19	140	0.4	260	0.8
Berkley Bridge, Eastern Branch	36 50	76 17	120	0.3	265	0.8
Berkley, Southern Branch	36 50	76 18	215	0.3	300	0.8
Chesapeake, Southern Branch	36 48	76 17	180	0.7	0	0.8
Gilmerton Hwy. bridge, Southern Branch	36 46	76 18	180	0.6	0	0.7



**ANCHORAGE AREAS**  
 (100, 100 deep fms. A)  
 Limits and coverages of anchorage areas are shown in magenta.  
**ALL ANCHORAGES ARE FOR GENERAL USE**

(P) (O) (R) (S) (T)  
 (N-1) FOR YACHTS & PLEASURE CRAFT

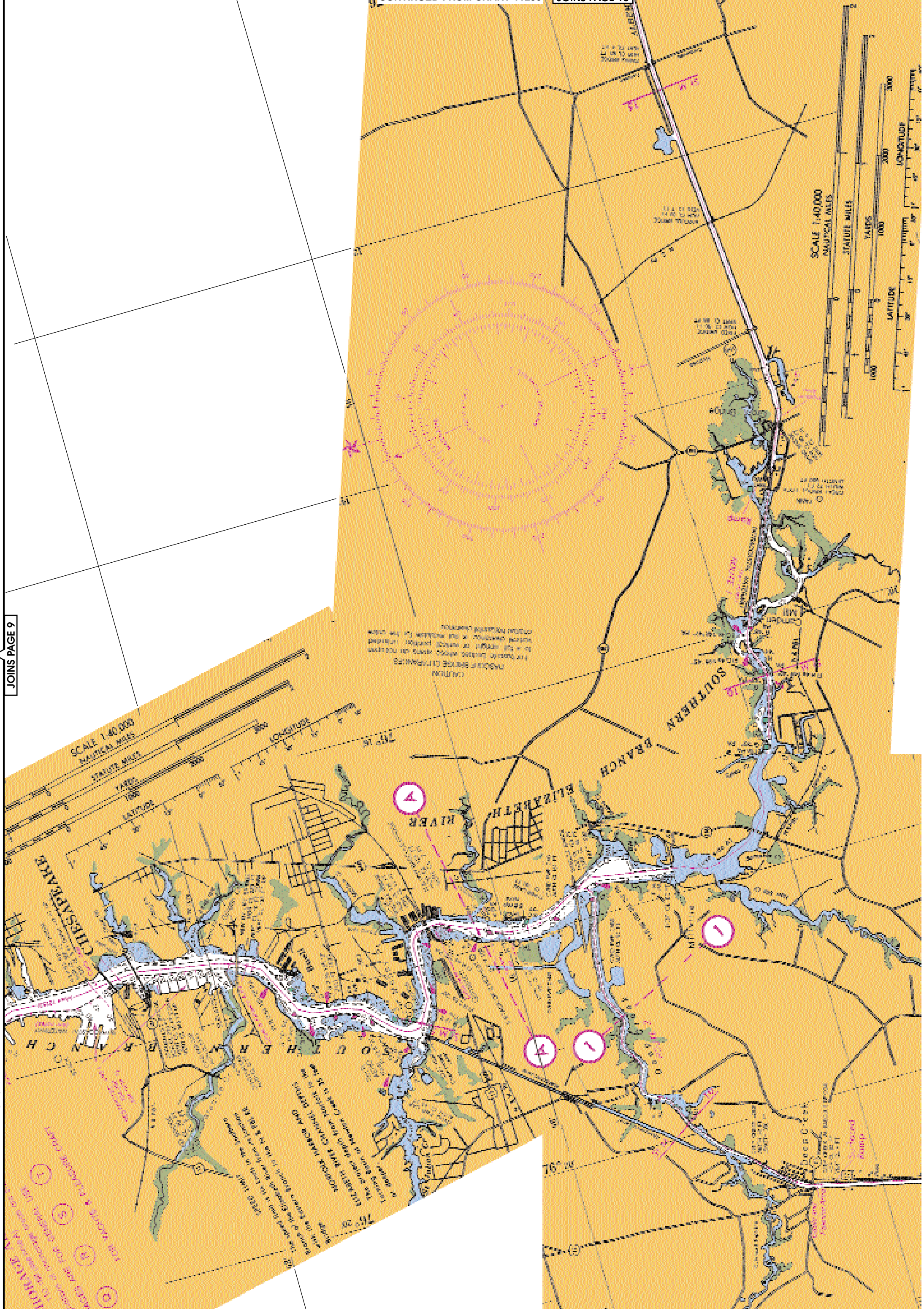
JOINS PAGE 10

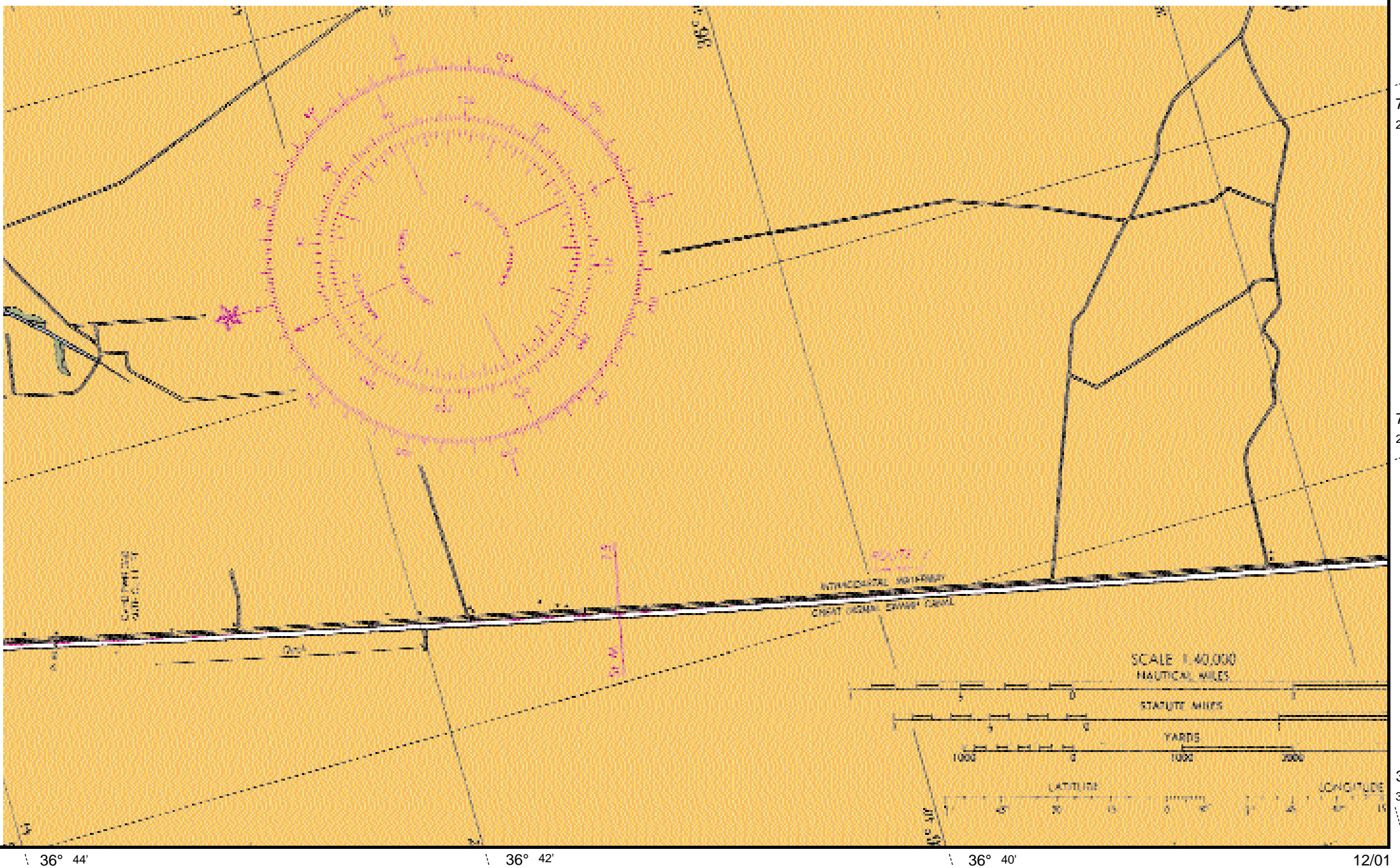
36° 48'

76° 12'

76° 14'

JOINS PAGE 9





76° 20'

76° 22'

36° 38'

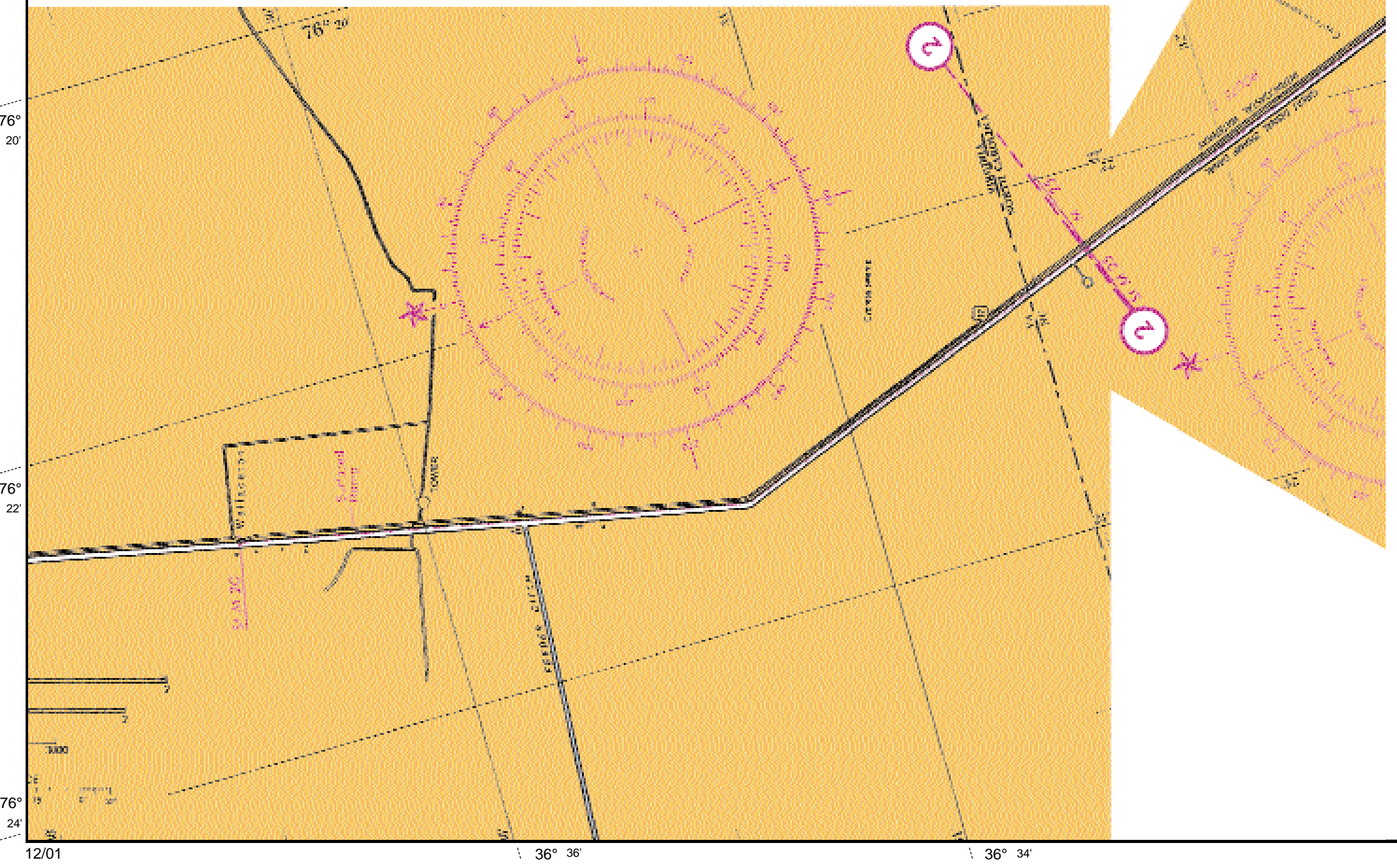
36° 44'

36° 42'

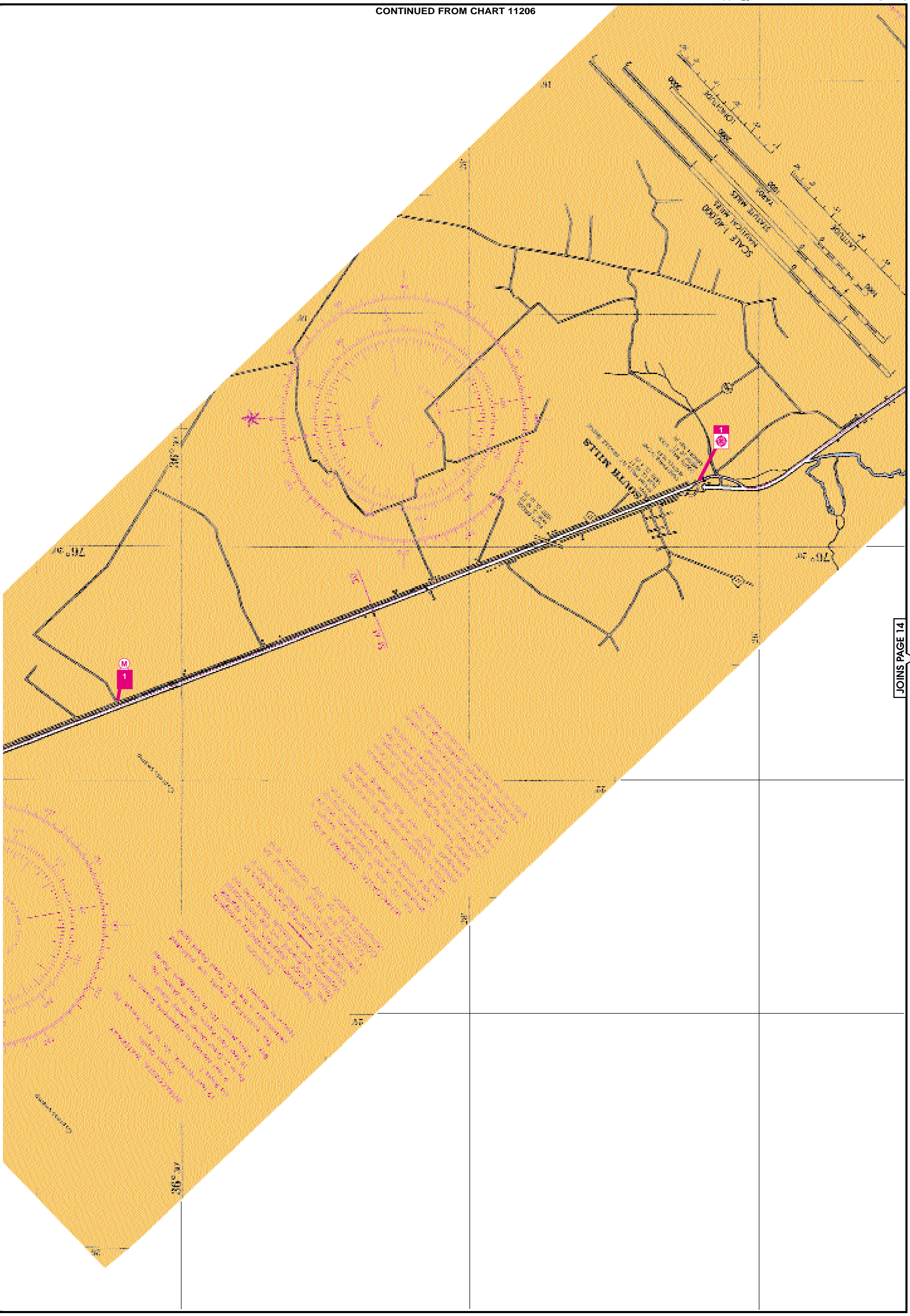
36° 40'

12/01

JOINS PAGE 11







JOINS PAGE 14